



Evaluation of Healing and Microbial Responses to Surgical Wounds in Alloxan-induced Diabetic Rabbits

Jonas Anayo Onah ^{a*}, Samuel Tanko Fadason ^b,
Ebenezer Olaoluwa Abidoye ^b, Kwem Kadima ^c
and Simon Ikechukwu Enem ^d

^a Department of Veterinary Surgery, University of Abuja, Nigeria.

^b Department of Veterinary Surgery and Radiology, Ahmadu Bello University, Zaria, Nigeria.

^c Veterinary Teaching Hospital, Ahmadu Bello University, Zaria, Nigeria.

^d Department of Veterinary Public Health and Preventive Medicine, University of Abuja, Nigeria.

Authors' contributions

This work was carried out in collaboration among all authors. Authors JAO, STF and KK designed the study. Authors EOA, JAO and SIE performed the statistical analysis, wrote the protocol and wrote the first draft of the manuscript. Authors JAO, STF, KK and EOA managed the analyses of the study. Authors JAO and STF managed the literature searches. All authors read and approved the final manuscript.

Article Information

DOI: 10.9734/JABB/2022/v25i9594

Open Peer Review History:

This journal follows the Advanced Open Peer Review policy. Identity of the Reviewers, Editor(s) and additional Reviewers, peer review comments, different versions of the manuscript, comments of the editors, etc are available here: <https://www.sdiarticle5.com/review-history/90840>

Original Research Article

Received 15/06/2022

Accepted 22/08/2022

Published 08/12/2022

ABSTRACT

The wounds of diabetic patients are associated with delayed healing and microbial invasion. This study evaluated the healing and microbial responses to surgical wounds in diabetic rabbits. Sixteen (16) New Zealand White rabbits were used in this study. They were divided into 4 groups of 4 rabbits each, namely; A, B, C and D. A is the control (non-diabetic and non-wounded), B (diabetic and non-wounded), C (wounded and non-diabetic) and D (wounded and diabetic). Three (3) cm² skin wounds were created in a standard aseptic condition while diabetes was induced by

*Corresponding author: E-mail: jonas.anayo@uniabuja.edu.ng;

intravenous administration of 200 mg/kg of alloxan monohydrate. Blood samples were collected from ear vein of each rabbit on days 0, 3, 7, 14, 21 and 28 post-surgery for analysis of blood glucose level. Wound samples were collected on days 3, 7, 14 and 21 to evaluate microbial contaminants. The wounds were examined for exudation and recorded as none (0), scant (1), moderate (2) and large (3) and diameter of wound epithelialization and contraction were determined. The blood glucose concentration of groups B and D from days 3 to 28 ranged between 288.00 ± 40.22 mg/dl to 358.65 ± 25.89 mg/dl, and were significantly higher ($P < 0.05$) than the corresponding values of groups A and C which ranged from 120.60 mg/dl ± 14.29 to 129.60 ± 8.18 mg/dl. The rate of wound contraction in the C group on day 7 ($11.02 \pm 2.17\%$) was significantly higher ($P < 0.05$) than the D group ($2.23 \pm 4.60\%$). *Staphylococcus* and *Pseudomonas* subspecies were identified in the wounds of rabbits in groups C and D. It was concluded that alloxan-induced diabetes caused delayed wound healing. At the same time *Staphylococcus* and *Pseudomonas species* were the predominant microorganism detected in the acute wounds of diabetic and non-diabetic rabbits.

Keywords: Evaluation; wound healing; alloxan-induced diabetes; microbial infection; NZW rabbits.

1. INTRODUCTION

Wound healing is a fundamental, dynamic, co-ordinated interdependent, and overlapping cellular and immunologic response of tissues to injury [1,2,3]. It is essential to prevent pathogenic invasion of damaged tissues and to partially or completely reform the affected tissues [2,3]. Experimental wounds prepared under aseptic conditions are expected to heal at a specific range of times. However, when this co-ordinated biological process that restores tissue continuity after injury is interrupted due to some disease conditions or infections, the wound healing may delay.

Diabetes mellitus is a metabolic disorder characterized by hyperglycemia, either because the body does not produce enough insulin, or because of lack of response of cells to insulin that is produced [4,5]. The hyperglycemia is manifested as glycosuria, hyperlipidemia polyuria and polydipsia [5,6]. The disease affects man and animals worldwide [7,8]. Nigeria has the most significant number of people living with diabetes in Africa [9,10] reported a prevalence of 0.34% of diabetes mellitus among dogs attending first opinion practice in the UK. Also, [11] reported a prevalence of 0.22 % of diabetic mellitus cases among dogs presented for Veterinary Care in Warri, Delta State, Nigeria.

It has been established that impaired wound healing is a notable complication of diabetes mellitus [12]. Such impaired wound healing develops due to various factors associated with diabetes including slow metabolic rate, macro and microvascular complications at the edges of the wounds and peripheral neuropathy [12,13].

Infections have been identified as one of the major contributing factors to delayed wound healing in diabetic and normoglycemic wounds. These wound infections may include bacterial, viral and fungal infections [14,15]. Diabetic wounds develop a sustained and co-invasive infections that delay wound healing [16].

Diabetes affects virtually all the stages of wound healing. The impaired healing observed in diabetic wounds correlates with decreased keratinocyte, fibroblast and immune cell migration into the wound, reduced endothelial cell angiogenesis and decreased efferocytosis [17]. Worthy of note is that there are numerous recent advances in therapeutic modalities targeting enhancing wound healing throughout the world. However, a thorough knowledge of the association between microbial invasions of diabetic wounds and the rate of diabetic wound healing is of utmost importance in the study of wound physiology, which poses a clinical challenge [16]. [3] proposed an ideal intervention for wound care that must involve components that act at different stages in the process of natural wound healing such as blood-clotting, anti-microbial, growth-promoting and analgesic properties. Animal models of diabetes are useful in biomedical studies because they promise new insights into human diabetes [18]. This study evaluated the healing and microbial responses to surgical wounds in alloxan-induced diabetic rabbits.

2. MATERIALS AND METHODS

2.1 Experimental Animals, Feeding and Conditioning

This study was carried out in the Department of Veterinary Surgery and Radiology, Faculty of

Veterinary Medicine, Ahmadu Bello University, Zaria, Kaduna State, Nigeria. Sixteen adult New Zealand White (NZW) rabbits of both sexes aged between 11.6 - 12.4 months and weighing between 1.8 - 3.2 kg were used for this study. They were procured from the National Animal Production and Research Institute (NAPRI), Zaria, Kaduna State, Nigeria.

The rabbits were kept in intensive management system in separate cages and fed morning and evening daily with combined poultry grower, and finisher feeds (Grand Cereals Limited, Jos, Plateau State) and miller's bran that was mixed in equal proportion in order to regulate the blood glucose level of the hyperglycaemic groups. *Daucus carota subsp. sativus* leaves were given to the rabbits twice weekly to avoid gastrointestinal impaction and constipation while water was given *ad-libitum* throughout the experimental period.

The rabbits were conditioned in the laboratory for two weeks before the commencement of the experiment. During this period, they were administered with anthelmintic Ivermectin (Hebei, Kexing pharmaceutical, China) prophylaxis at dosage of 0.4mg/kg started and repeated after two weeks to prevent mites and other internal and external parasites. The rabbits were clinically evaluated using body condition scores, vital and hematological parameters and adjudges apparently healthy before they were certified fit for the study.

2.2 Experimental Protocols

The rabbits were divided into 4 groups of 4 rabbits each, namely; A, B, C and D. Each group comprises of 2 males and 2 females. Group A (control): No Diabetes was induced and No Wound was created (NDNW); Group B: Diabetes was induced in this group, but No Wound was created (DNW); Group C: Wound was created, but Diabetes was Not induced (WND) and Group D: Wound was created and Diabetes was induced (WD), respectively.

2.3 Induction of Diabetes

The rabbits were first anesthetized by intramuscular administration of 7 mg/kg xylazine hydrochloride (Bioveta a. s., Czech Republic) and 50 mg/kg ketamine hydrochloride (Labourite pharmaceutical, India). The pinna was then shaved and dabbed with xylene to dilate the marginal ear vein and 200 mg/kg of Alloxan Monohydrate (SIGMA-Aldrich UK) was

administered intravenously through the marginal ear vein on two occasions with 100 mg/kg each at an interval of 72 hours [19, 20]. Blood glucose level was estimated in the blood samples collected via the ear vein using a glucometer (ACCU-CHEK^(R), Roche, Mannheim, Germany) daily until hyperglycemia was established and stabilized.

2.4 Wound Creation

The dorsum of four rabbits each in the NDW (group C) and WD (group D) were prepared aseptically. The rabbits were anesthetized by intramuscular injection of xylazine hydrochloride ((Bioveta a. s., Czech Republic) at 7 mg/kg and Ketamine Hydrochloride (Labourite pharmaceutical, India) at 50 mg/kg [21,22]. A full-thickness skin wound of 3 cm² (Fig. 1) was created at the dorsum of each of the rabbits using a template designed from x-ray film [23]. The wounds were bandaged with sterile gauze and re-dressed only on the days of sample collections (days 0, 3, 7, 14, 21 and 28).

2.5 Blood and Microbial Sample Collections

A drop of blood was collected from the ear vein of each of the rabbits on day 0 (before wound creation) and on days 3, 7, 14, 21 and 28 post-surgery for blood glucose evaluation. Sterile swabs were used to collect microbial samples from the wound surfaces in groups C and D on days 3, 7, 14 and 21 post-surgery for qualitative evaluation of microorganisms present in the wound. Subsequently, after the experiment, the diabetic rabbits were nursed back to their normal health using insulin to reverse diabetes.

2.6 Wound Assessment

On each day of post-surgery sample collections (days 0, 3, 7, 14, 21 and 28), the blood was placed in ACCU-check glucometer (ACCU-CHEK^(R), Roche, Mannheim, Germany) and the blood glucose estimates recorded. The wounds were clinically assessed for exudation, epithelialization and contraction. The exudation was recorded as none (0), scant (1), moderate (2) and large (3) [30]. The diameter of the wounds and the epithelial region were measured using tracing papers (Fig. 2) and a meter rule (Fig. 3a), and calculated with graph sheets (Fig. 3b) to determine the epithelialization and contraction [24,25]. The percentage wound contraction and epithelialisation were determined using the formulae described by [26].

2.7 Microbial Evaluation

The various isolation media and reagents used for this study were purchased from Oxoid® Ltd. and were prepared as described by the manufacturers [27]. The swab samples were inoculated in already prepared blood agar and incubated at 37°C for 48 hours and clusters of microbial growth were observed. This microbial growth was further sub-cultured; A newly prepared blood agar was divided into 4 quadrants. A portion of the medium that has the microbial growth was collected using a wire loop sterilized to red hot and cooled for 10 seconds. The loop was streaked at one quadrant several times. The blood agar was turned at 90°C and from the first quadrant, the second quadrant was streaked several times. The same process was repeated for the third and fourth quadrants for isolation of discrete colonies. The subculture process was also carried out in MacConkey agar. The discrete colony was transferred to nutrient agar slant and incubated at 37°C for 48

hours for their separation into morphological characteristics. These pure isolates were subjected to gram stains and various biochemical reactions such as: *Catalase test*, *Oxidase test*, *Indole test*, *Voges- Proskauer (VP) Test*, *Methyl Red*, *Citrate Utilization*, *Motility test*, *Urease test*, *TSI test*, *Urease test*, *Mannitol test*, *Coagulase test*, *Maltose test* and *Arginine test* [28,29,30].

2.8 Data Analysis

The data obtained from blood glucose estimation and wound assessment, were expressed as mean \pm Standard Error of Mean (SEM), and subjected to statistical packages with Graph-Pad Prism version 5.03 and subsequently analyzed using One Way Analysis of Variance (ANOVA) and Friedman test. Values of $P = .05$ were considered significant. The results were presented in tables and figures.



Fig. 1. The 3 cm² full-thickness wound (arrow) created at the aseptically draped back of the New Zealand White Rabbit



Fig. 2. Marking of wound diameter using a transparent tracing paper (arrow)



Fig. 3a. Measurement of wound diameter using a meter rule (arrow)

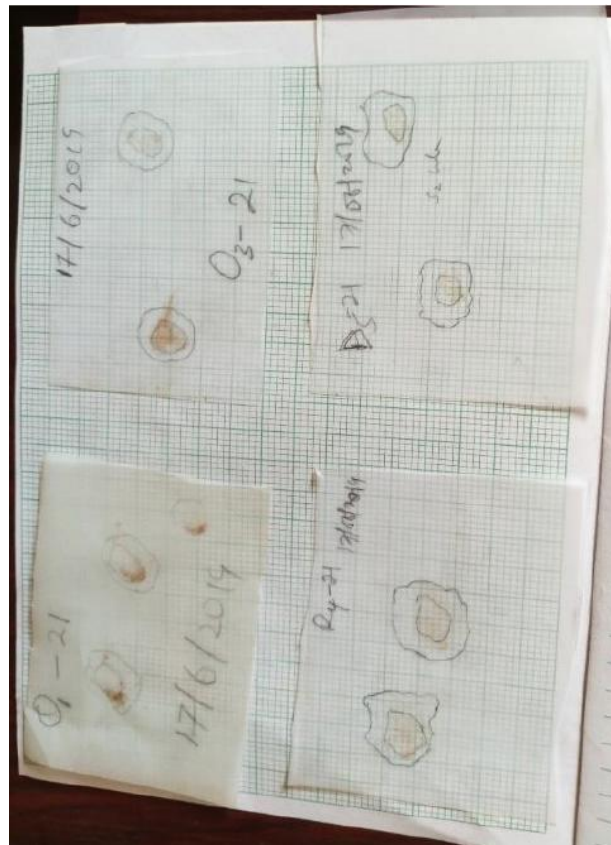


Fig. 3b. Calculation of the size and epithelial tissues in the wound using a tracing paper in a graph sheet

3. RESULTS

The mean blood glucose level of the rabbits in group B was lowest on pre-surgery day (0), and increased sharply on post-surgery day 3 (329.40 ± 61.56), and remained at high value until day 28 (273.60 ± 37.26). The mean blood glucose level of rabbits in group D was lowest on Pre-surgery

day 0 (113.80 ± 12.50), increased sharply and reached the peak on day 3 (344.70 ± 50.29) and remained constantly high until 28 (295.20 ± 42.57). There was no significant difference ($P > 0.05$) in the mean blood glucose level of the experimental rabbits of the different groups before the induction of diabetes (day 0). Following induction of diabetes, the mean blood

glucose level of groups B and D rabbits rose significantly ($P < 0.05$) and were higher than the levels in groups A and C rabbits from days 3 to 28 (Fig. 4). There was no significant difference ($P > 0.05$) between the mean blood glucose values of groups B and D; and also, between the values in groups A and C rabbits.

The mean exudate values in group C was highest on day 3 (1.75 ± 0.25). In comparison, the value of group D was highest on days 3 (1.75 ± 0.25) and 7 (1.75 ± 0.25) before the values in both groups declined progressively to approximately 0.00 ± 0.00 on day 21 (Fig. 5). There was no significant difference ($P > 0.05$) in the exudate value observed between the two wounded (WND and WD) groups.

The degree of epithelialization (%) in group C rabbits was observed on days 14 (29.37 ± 8.17) and 21 (73.50 ± 1.37), while that of group D rabbits was on days 14 (31.78 ± 5.20) and 21 (74.66 ± 7.01) (Figs. 6 and 8). The wounds in both groups had healed completely by day 28 (Fig. 9). There was no significant difference ($P > 0.05$) between the values of percentage wound epithelialization of rabbits in groups C and D throughout the period of study. However, the percentage wound epithelialization observed in group (D) rabbits on days 14 and 21 were slightly

higher than the corresponding values observed in group C rabbits (Fig. 6).

The percentage wound contraction in rabbits in group C was lowest on day 3 (1.15 ± 3.36), but increased progressively to complete contraction on day 28 (100.00 ± 0.00). Also, the percentage wound contraction in group D rabbits was lowest on day 3 (1.02 ± 2.50) but increased progressively to complete contraction on day 28 (100.00 ± 0.00). The value of the percentage wound contraction observed on day 7 in group C (11.02 ± 2.17) was significantly higher ($P < 0.05$) than that observed in the D group (2.23 ± 4.60) (Fig. 7). There was complete wound contraction (100) in both group C and D rabbits on post-surgery day 28 (Fig. 9).

Four bacterial isolates namely; *Staphylococcus* species, *Pseudomonas* species, *Bacillus* species and *Corynebacterium* were identified from the wounds of the two wounded groups (C and D). However, biochemical test results confirmed the presence of only two bacterial species; *Staphylococcus* spp. and *Pseudomonas* spp (Table 1). Further biochemical tests result based on conventional biochemical identification of *Staphylococcus* isolate [30] revealed the presence of two *Staphylococcus* subspecies namely; *Staphylococcus aureus* and *Staphylococcus epidermidis* (Table 1).

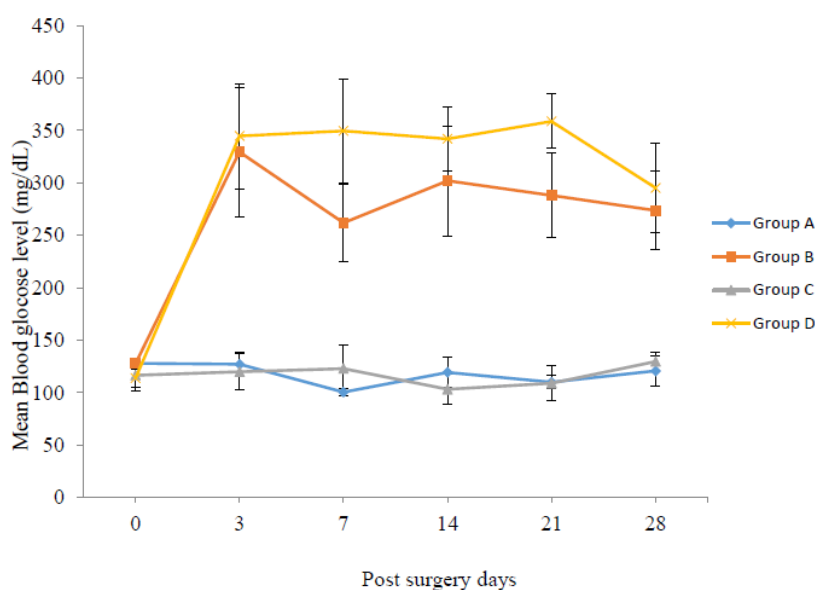


Fig. 4. The mean \pm SEM blood glucose concentration in rabbits of experimental groups ($P \leq 0.05$)

Key: Group A = Non-Diabetic and Non-Wounded (NDNW), Group B = Diabetic and Non-Wounded (DNW), Group C=Wounded and Non-Diabetic (WND), Group D = Wounded and Diabetic (WD).

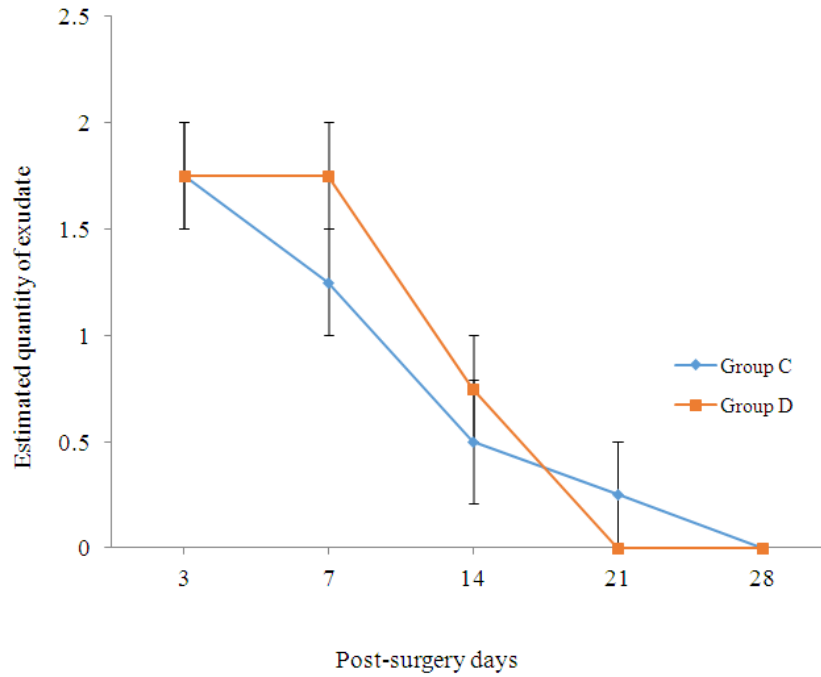


Fig. 5. The Mean ± SEM wound exudates value in C and D groups of experimental rabbits ($P \leq 0.05$)

Key: Group C=Wounded and Non-Diabetic (WND), Group D = Wounded and Diabetic (WD).

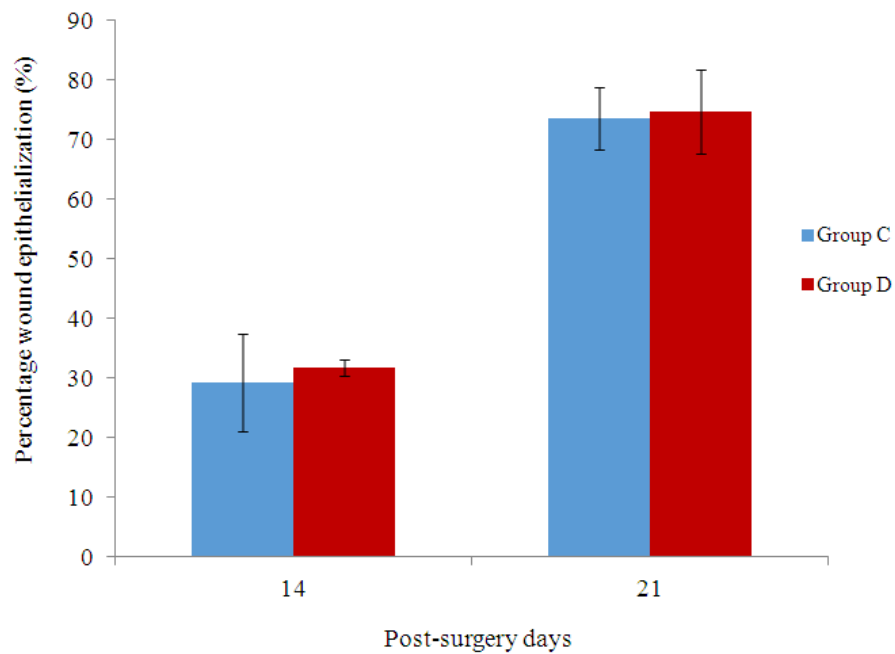


Fig. 6. The Mean ± SEM percent wound epithelialization in the C and D groups of the experimental rabbits ($P \leq 0.05$)

Key: Group C=Wounded and Non-Diabetic (WND), Group D = Wounded and Diabetic (WD).

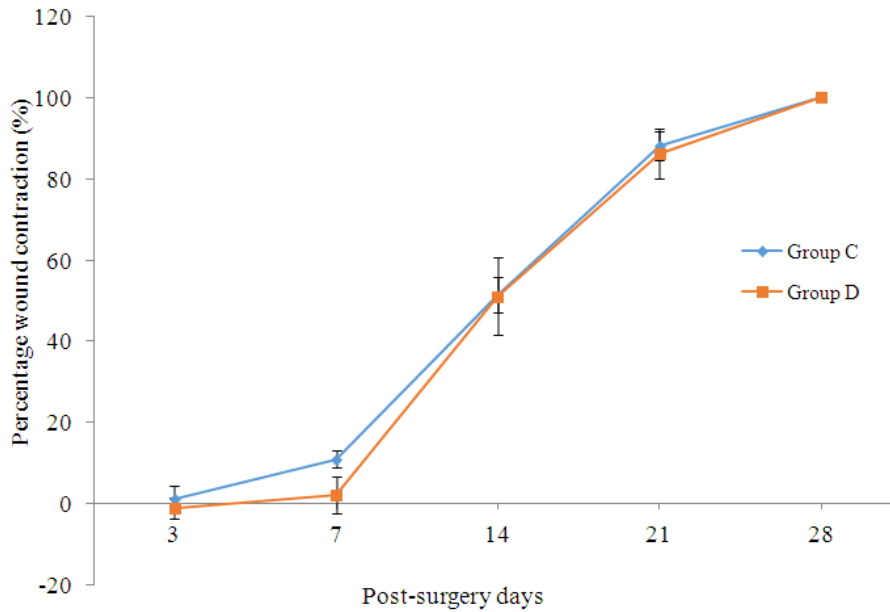


Fig. 7. The Mean \pm SEM percent wound contraction in the C and D groups of experimental rabbits ($P \leq 0.05$)

Key: Group C=Wounded and Non-Diabetic (WND), Group D = Wounded and Diabetic (WD).

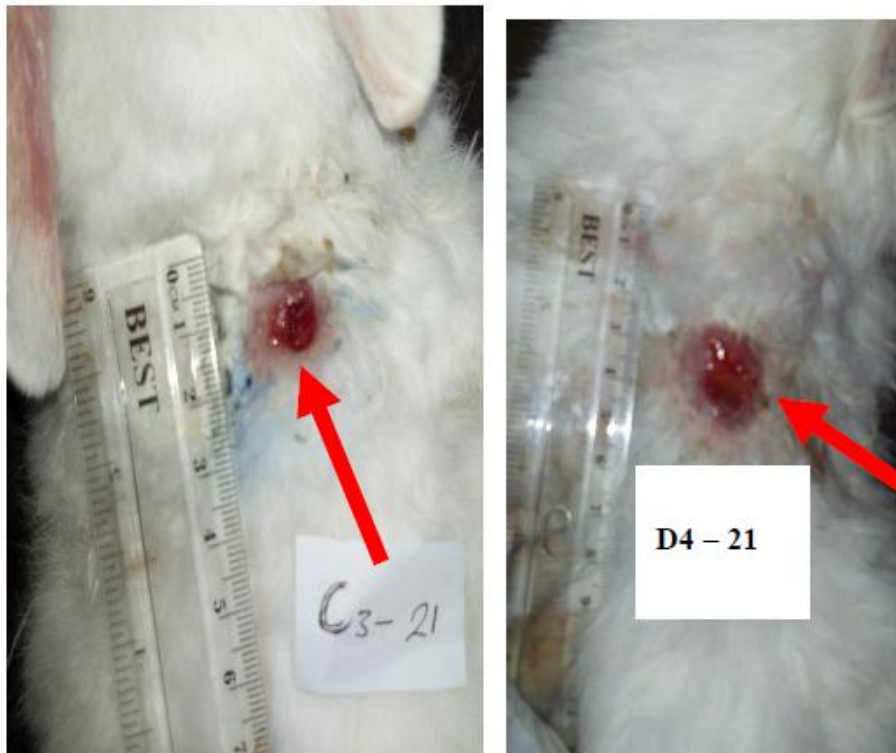


Fig. 8. The Wound of the C and D Rabbit Groups on PSD 21 at the terminal Stage of Epithelialization and Contraction (sizes of the wounds reduced more than half (arrows))
Key: Group C=Wounded and Non-Diabetic (WND), Group D = Wounded and Diabetic (WD), C₃-21 = Rabbit number 3 in group C on psd 21, D₄-21 = Rabbit number 4 in group D on psd 21

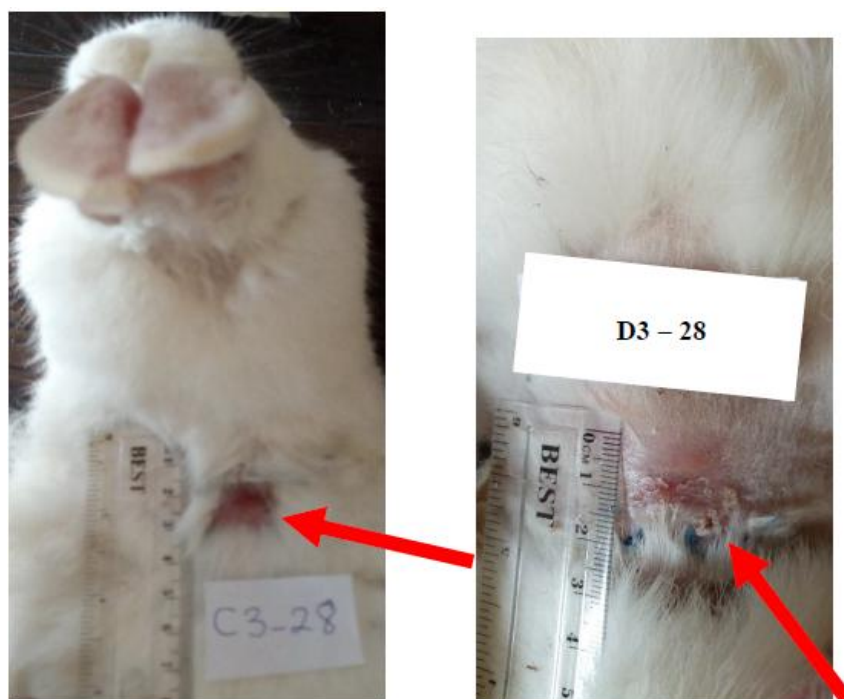


Fig. 9. The Wound of the C and D Rabbit Groups on PSD 28 with Complete Contraction, and Scar Formation (arrows)

Key: Group C=Wounded and Non-Diabetic (WND), Group D = Wounded and Diabetic (WD), C₃-28 = Rabbit number 3 in group C on psd 28, D₃-28 = Rabbit number 3 in group D on psd 28

Table 1. The biochemical reactions of the bacterial organisms isolated and identified in the wounds of the rabbits in groups C (WND) and D (WD).

Biochemical test	<i>Staphylococcus aureus sub. aureus</i>	<i>Staphylococcus epidermidis</i>	<i>Pseudomonas spp</i>
Grams reaction	+ cocci	+ cocci	- rod
Catalase test	+	+	+
TSI test	**	**	-
Indole test	**	**	-
MR test	**	**	-
Citrate test	**	**	+
Urease test	-	+	-
Mannitol test	+	-	**
Vp. Test	-	**	-
Oxidase test	-	-	+
Coagulase test	+	+	**
Haemolysis test	+	-	+
Arginine test	+	-	**
Maltose test	+	+	-

Keys: WND = Wounded and Non-Diabetic, WD = Wounded and Diabetic, + = positive, - = negative, ** = no test carried out, MR = methyl red.

4. DISCUSSION

Wound healing is a cellular and immunologic response of tissues to injury essential for repair of the injured tissues [1,3]. The wounds of diabetic patients are associated with delayed

healing and microbial invasion of the injured tissues.

The observed rise in mean blood glucose level of rabbits in DNW and WD groups, above the average mean blood glucose level of New

Zealand White rabbits (150g/dl) was an indication of hyperglycemia, a major sign of diabetes mellitus [20]. It was possible that alloxan destroyed the pancreatic β -cells in these rabbits and caused a deficiency of insulin secretion which resulted in the metabolic derangements associated with Type-1 Diabetes Mellitus (T1DM). It could have also generated reactive oxygen species in a cyclic redox reaction with its hydroxyl radicals responsible for the selective necrosis and death of the pancreatic islet β -cells [17]. There was no significant difference ($P > 0.05$) between the blood glucose level of the rabbits in groups A and C and between groups B and D.

Scanty to moderate exudates were observed in the wounded rabbits in groups C and D. The wound exudates may contain fluid, proteins, serum, fibrin, and white blood cells from capillaries into a wound defect and combine with necrotic cells and other waste materials in the wound to form wound exudates [31,32]. It was probable that such components of exudates that facilitate healing such as fibrin, proteins, serum and water, and at a therapeutic proportion dominated the exudates observed in both groups C and D and contributed to the healing of the acute wound. The exudate in WD group remained at the peak up to PSD 7 as against PSD 3 in group C probably because there was a delay in the metabolic processes that facilitate the resorption of the preparatory phases of wound healing in this WD group. Such delay could cause retention of these exudates at the peak value within 7 days duration in this group D when compared with group C. Scant to moderate wound fluids was beneficial to wound healing because they provided a moist environment for cell migration and supply of various nutrients needed for the healing [33]. It has been reported that moist wounds heal two to three times faster than dry wounds [32]. The completed wound epithelialization and contraction within 28 days indicated that these defects healed by myofibroblast contraction and were in line with expected rate of experimental wound contraction in rabbits [34]. The loose skin at the rabbit's back and linear edges of the square wounds favoured effective contraction, and the linear traction forces of the myofibroblasts.

The mean percentage epithelialization in rabbits in group D which was slightly higher than the value recorded in group C on post-surgery day 14 indicated delayed wound healing in group D. Epithelial tissue covering was observed higher in

group D probably because the contraction was delayed, due to delayed centripetal movement of the dermis and epidermis that border the wound defect to reduce the wound size. In group C, the linear traction force of the myofibroblast was at a higher rate which facilitated the loose skin to cover the epithelial tissues within an interval of assessment [34]. On the other hand, the slow body metabolism associated with diabetes delayed these wound healing processes in group D rabbits thereby exposing the epithelial tissues for a longer duration of time for assessment [13].

A shorter duration of wound contraction observed in group C indicated faster granulation and epithelialization which prepared the wound bed for faster contraction in this group when compared with group D. It might also be that there was a delay in the earlier preparatory phase of wound healing such as regression and haemostasis which consequently delayed contraction from PSD 3 to 14 in group D. Hyperglycaemia following diabetes caused excessive thickening of the basement membrane of blood vessels at the edges of skin wounds which resulted in poor vascular network and disorganized stages of wound healing [13]. Hyperglycaemia has also been implicated in the decreased population of endothelial progenitor cells, progression of macro and microvascular complications, dysfunctional and loss of extracellular integrity and decreased efferocytosis all of which delay wound angiogenesis [13,17].

The minimal organism isolated in this work might be due to comprehensive aseptic measures employed both in the surgery theatre, animal house and throughout the period of wound assessment. These two organisms (*Staphylococcus* and *Pseudomonas*) have always been isolated from acute, traumatic and diabetic wounds probably because they are endemic and ubiquitous in our environment, opportunistic in nature and have high affinity in wounds [30]. It has been reported that *Staphylococcus aureus* is the most frequently isolated organism from diabetic foot infection [14,15]. Samples from the wound of diabetic patients collected from the hospital yielded only *Staphylococcus* spp. and *E. coli* [15]. The wounds created in this research healed within twenty-one days which indicated a process of normal acute wound healing, and therefore justified the isolation of the two organisms (*Staphylococcus* and *Pseudomonas*) that have

been previously reported to be common in acute wounds [35].

5. CONCLUSION

It was concluded that alloxan-induced diabetes causes delayed wound healing at all the phases of wound healing in NZW rabbits and *Staphylococcus* and *Pseudomonas species* are the predominant microorganisms isolated from the acute wounds of diabetic and non-diabetic NZW rabbits. It is recommended that other microbial organisms such as fungal, viral and parasitic organisms associated with wounds of diabetic animals should be evaluated.

ETHICAL APPROVAL

Ethical clearance was obtained for this study from Ahmadu Bello University Committee on Animal Use and Care (ABUCAUC), (Reference number: ABUCAUC/2019/028).

ACKNOWLEDGEMENT

University of Abuja; Faculty of Veterinary Medicine, ABU, Zaria.

COMPETING INTERESTS

Authors have declared that no competing interests exist.

REFERENCES

- Hosgood G, Wound repair and specific tissue response to injury. In: Slatter D. editor. Textbook of small animal Surgery; (3rd ed. Philadelphia; Saunders Elsevier Sciences. 2002;66 – 86.
- Schultz GS, Chin GA, Moldawer L, Diegelmann R.F. Principles of Wound Healing. In: Mechanisms of Vascular Disease (A Reference Book for Vascular Specialists): by Robert Fitridge and Matthew Thompson. University of Adelaide Press; 2011.
Available <https://www.jstor.Org/stable/10.20851/j.ctt1sq5w> 94.27.Downloaded; 31st March 2020.
- Sharma AK, Sunder V, Yashavarddhan MH, Shukla SK. Wound healing: current understanding and future prospect. International Journal of Drug Discovery. 2017;8(1):240-246.
Available: [https:// bioinfopublication. Org /jouarchive. php?opt=&jouid=BP J0000224](https://bioinfopublication.Org/jouarchive.php?opt=&jouid=BP J0000224)
- Pradham L, Nabzddyk CS, Lorgefo FW, Veves A. Expression of neuropeptide and Cytokines in a rabbit model of diabetic neuroischemic wound healing. Journal of Surgical Research. 2013;167:336 – 342.
- Sharma RV, Dave V, Sharma S, Jain P, Yadav S. Experimental Models on Diabetes: a comprehensive review; International Journal of Advances in Pharmaceutical Sciences. 2013;4:01-08.
Available: <http://www.arjournals.org/index.php/ijaps/index>
- Oriaghan EA, Inegbenebor V, Shelu OJ, Obhimon O, Edono EO, Ekhoeye I. The effect of monosodium glutamate on blood glucose in adult rabbits as model. International Journal of Basic, Applied and Innovative Research. 2012;1(1):10 –18.
- Nelson RW. Canine diabetes mellitus. In: Ettinger, SJ; Feldman, EC, Textbook of Veterinary Internal Medicine, 7th edition Saunders publication: St. Louis, Saunders. 2010:1782-1796.
- World Health Organisation. Screening for type-2 diabetes. Report of the World Health Organization and International Diabetes Federation Meeting. Geneva; 2003.
- Chinenye S. and Young K. The state of diabetes care in Nigeria: a review. The Nigeria Health Journal. 2011;11(4): 101 – 106.
- Mattin MJ, O'Neill DG, Church DB, McGreevy PD, Thomson PC, Brodbelt, DC. An epidemiological study of diabetes mellitus in dogs attending first opinion practice in the UK. Veterinary Microbiology. 2014;174(14):349.
- Gani E Ihedioha JI. Evaluation of the prevalence of diabetes mellitus and impaired glucose homeostasis in dogs presented for veterinary care in Warri, Delta State Nigeria. Book of Abstract, 6th /53rd NVMA Annual Congress of Nigeria Veterinary Medical Association (NVMA). 2016:82.
- DeClue CE, Shornick LP. The cytokine milieu of diabetic wounds. Diabetes Management. 2015; 5(6):525-537.
- Okonkwo UA, DiPietro LA. Diabetes and wound angiogenesis. International Journal of Molecular Sciences. 2017;18;1419: 1–15.
- Hayat AS, Khan AH, Masood N, Shailch N. Study for microbiological pattern and *in vitro* antibiotic susceptibility in patients having diabetic foot infections at tertiary

- care hospital in Abbottabad. World Applied Scientific Journal. 2011a;12(2):123–131.
15. Daniel JC, Sowmiya SE, Gowthami E. Isolation and identification of bacterial pathogens from wounds of diabetic patients; International Journal of Current Microbiology and Applied Sciences. 2013;2(11):72–77.
 16. Hirsch T, Malte S, Baraa Z, Till K, Magdalena F, Hans-Ulrich S, Elof E. Enhanced susceptibility to infections in a diabetic wound healing model. Biomedical Central Surgery. 2008:1471– 2482.
 17. Brem, H. and Tomic-Canic, M. Cellular and molecular basis of wound healing in diabetes. Journal of Clinical Investigation. 2007;117:1219–1222.
 18. Singh MP, Pathak K. Animal models for biological screening of anti-diabetic drugs: An overview. European Journal of Experimental Biology. 2015;5(5):37 – 48.
 19. Sun WT, Lei CL, Bi CC, Chen ZL, Zhang L. Effect of alloxan time administer drug on establishing diabetic rabbit model. International Journal of Ophthalmology. 2010;3(3):200– 02.
 20. Wang J, Wan R, Mo Y, Zhang Q, Sherwood LC, Chien S. Creating a long-term diabetic rabbit model. Experimental Diabetes Research. 2010:75 – 95.
 21. Flecknell PA. Anaesthesia. In: Manual of Rabbit Medicine and Surgery. British Small Animal Veterinary Association. 2000:103-116.
 22. Martin M, Kirsipuu V. Rabbit anaesthesia. Cornell University Institutional Animal Care and Use Committee: P. 2016:1-6.
 23. Fletcher J. Development of a new wound assessment form. Wounds. 2010;6(1): 92 – 8.
 24. Kiliç S, Timurkaan N, Unsaldi S, Günay C, Stek Ö, Yilmaz B. Comparison of effects of some wound healing materials on full thickness skin wounds in rabbits. Turkish Journal of Veterinary and Animal Sciences. 2002;26(2):263 – 272.
 25. Hayat A, Temamogullari F, Yilmaz R, kerabulat O. Effects of Equisetum arvense on wound contraction of full thickness wound in rabbits. Journal of Animal and Veterinary Advances. 2011b;10(1):81 – 83.
 26. Sadeef F, Saleem R, Ahmed M., Ahmed SI, Navaid-ul-zafer. Healing potential of cream containing extract of Sphaeranthus indicus on dermal wounds in guinea pigs. Journal of Ethnopharmacology. 2006;107(2):161–3.
 27. Bridson EY. The oxoid manual 9th ed. Oxoid Limited, Hampshire, England; 2006. Available: <http://www.oxoid.com>
 28. Cheesbrough, M. District laboratory practice manual in tropical countries (part 2). Cambridge University Press, London. 2000:178 – 179.
 29. Ochei, Kolhatkar. Michael laboratory science, theory and practice (2nd.ed). Tata McGraw-Hill Publishing Company Ltd, New Delhi, India. 2000:1 – 349.
 30. Markey B, Leonard F, Archambault F, Cullinane M, Cullinane A, Maguire D. Clinical Veterinary Microbiology (2nd ed). MOSBY Elsevier; London.1 – 857.
 31. Lipowsky HH, Gao L, Lescanic A. Shedding of the endothelial glycocalyx in arterioles, capillaries, and venules and its effect on capillary hemodynamics during inflammation. The American Journal of Physiology: Heart and Circulatory Physiology. 2011;301(6): H2235 – 45.
 32. World Union of Wound Healing Societies (WUWHS) Consensus Document Woundexudate: effective assessment and management, Wounds International. 2019: 1–35.
 33. Cutting KF. Wound exudate: composition and functions. British Journal of Community Nursing. 2014;1-9.
 34. Pavletic MM. Atlas of small animal wound management and reconstructive surgery 3rd ed. Wiley-Blackwell (A John Wiley & Sons, Inc., Publication) Iowa, USA. 2010;1 – 669.
 35. Bowler PG. and Davies, BJ. The microbiology of acute and chronic wounds. Wounds. 1999;11(4):72–78.

© 2022 Onah et al.; This is an Open Access article distributed under the terms of the Creative Commons Attribution License (<http://creativecommons.org/licenses/by/4.0>), which permits unrestricted use, distribution, and reproduction in any medium, provided the original work is properly cited.

Peer-review history:

The peer review history for this paper can be accessed here:
<https://www.sdiarticle5.com/review-history/90840>